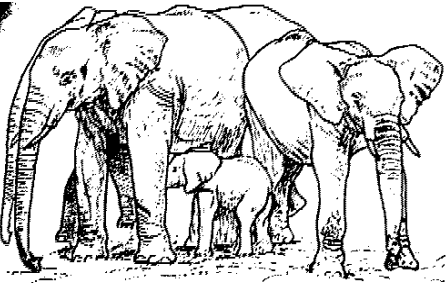




**ROYAL JOZINI PRIVATE GAME RESERVE**

**REGULATIONS AND GUIDELINES FOR ELEPHANT ENCOUNTERS**

Elephants have a comfort zone that shifts according to their mood and status in the herd. If you encroach on this comfort zone you are putting your life at risk. Always stop at a safe distance (**MINIMUM OF 80M**) and **WATCH THEIR BEHAVIOUR.**



Always first assess the elephants' mood and direction of movement before approaching them **SLOWLY**. **DO NOT BLOCK THE ELEPHANTS' WAY, CUT OFF THEIR ESCAPE ROUTE, ENCIRCLE THEM, OR COME BETWEEN A MOTHER AND CALF. ELEPHANT COWS ARE PARTICULARLY PROTECTIVE WHEN THERE ARE CALVES IN THE HERD.**

If you accidentally drive into a herd of elephants, remain calm and quiet and look for the first opportunity to retreat to a safe viewing distance.

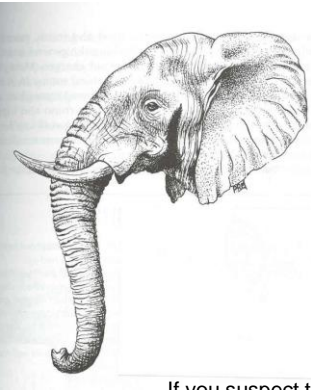
**Never** allow an elephant to make contact with your vehicle.

By demonstrating patience and respect for their SPACE, the safety, security and well-being of humans and elephants is maintained.

**Musth** is a periodic state of dominance in bull elephants that can lead to unpredictable behaviour and increased aggression.

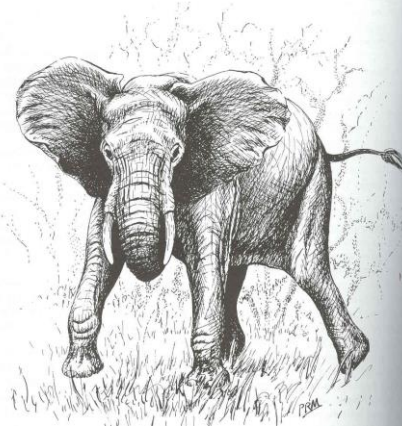
A musth bull is recognisable by:

- Profuse streaming from the temporal gland located between the eye and ear.
- Constantly dribbling urine or wet hind legs.
- A strong, musky odour, distinctly different from the typical "elephant" or dung smell



If you suspect that a musth bull is present at an elephant encounter, the **MINIMUM RECOMMENDED VIEWING DISTANCE IS 80M.**

Signs of stress or aggression in elephants include:



- Swinging the front foot
- Breaking vegetation without feeding on it
- Coiling, uncoiling and twitching of the trunk
- Vocalisations like trumpeting or bellowing
- Smelling in the direction of the vehicle
- Turning towards vehicle with ears spread
- Throwing objects towards vehicle
- Forward trunk swish
- Standing tall (head raised high, elephant peering over tusks, ears cocked and trunk hanging at an acute angle)
- Threat display (bending down with front of body onto knees and pushing head towards ground)

**IF YOU SEE ANY OF THESE SIGNS, YOU ARE TOO CLOSE! IMMEDIATELY GIVE THE ELEPHANTS MORE SPACE BY MOVING AWAY AT A SLOW SPEED.**

The aim of viewing elephants should be to see them behaving naturally in a secure environment. The purpose of the above regulations and guidelines is to develop relaxed encounters and quality sightings of the elephants under safe and comfortable conditions, and we ask for your cooperation.

Anyone found disobeying these regulations will be warned and faces the possibility of removal from the reserve. In addition, we ask all visitors to report transgressors to reserve management.

Elephants can be dangerous animals. Anyone disregarding these regulations directly endanger their own lives, as well as the lives of other visitors to the reserve, by encouraging potentially problematic behaviour. Elephants responsible for damage, injury or death may be destroyed, whether or not they were provoked. The future of the elephants therefore lies partly in your hands.

Contact Elephant Management:

**RJB6 General Manager: Jay (+268) 7602 3085 / (+27) 82 442 0290**  
**Head Ranger: Vusi 00268 7604 1180**